

KOHLTECH

Solutions For Every Industry & Every Build

MoDOT INSTALL GUIDE

PRODUCT MANUAL

Required Materials
Mounting Enclosure
Mounting Camera
Mounting Monitor

MODOT MDVR INSTALL GUIDE

Contents:

Mounting Enclosure.....3-4

Routing and connecting power cable5-6

Routing camera cable.....7

Mounting camera to arrow board.....8

Adjusting camera view and angle.....9



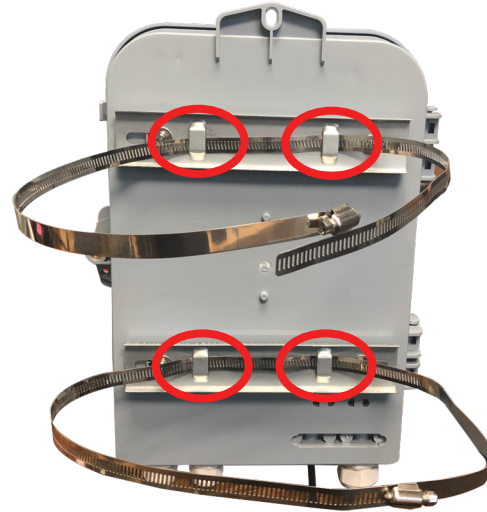
MOUNTING ENCLOSURE

1. Prior to mounting the enclosure, remove the mounting band from packaging and route the band through the brackets on the rear of the enclosure as pictured in image 1A and 1B.

1A.



1B.



2. After the enclosure has been equipped with the mounting band, you will need to locate the proper mounting location. When looking at the trailer with the face of the arrow board pointing away from you, locate the right-hand upright post as pictured in image 2A and 2B.

2A.



2B.



3. Once the post has been located, place the enclosure oriented with the wires at the bottom on the post, centered between the top and bottom bars as seen in image 3A and 3B.

3A.



3B.



4. Secure the enclosure to the post by tightening the bands while also ensuring a snug fit without over tightening causing damage to the bracket or the enclosure.

Routing and Connecting Power Cable

1. After the enclosure has been mounted, you will need to run the power cable as pictured in image 1A along the black bar and up the post on the left hand side into the black junction box. Route shown in image 1B.

1A.



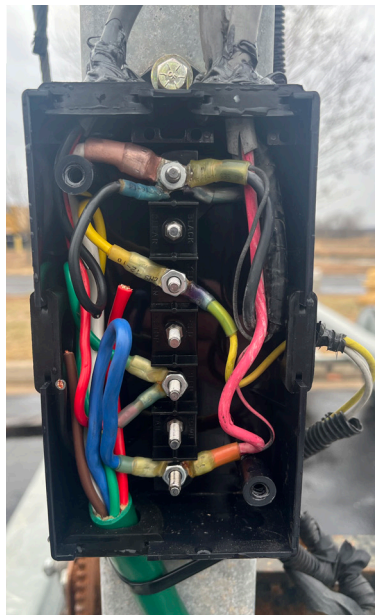
1B.



2. When running the power cable along the black bar ensure a zip tie is used to secure the wire every 12".

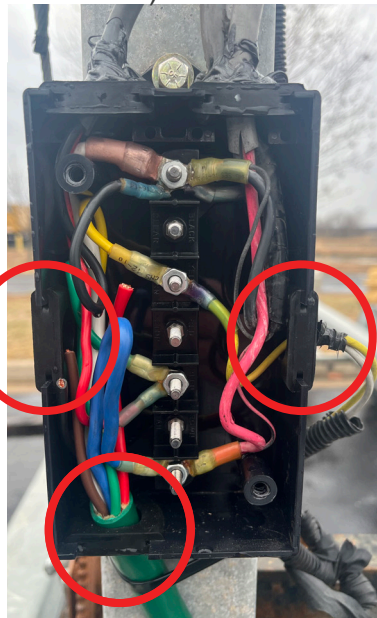
3. Once the wire is secured and you are ready to tie into the junction box, remove the face plate to expose the box as seen in image 3A. (A key may be needed to gain entry. Contact on-site facility manager for key) .

3A.



4. Route the power cable into the junction box using one of the 3 slide out grommets as seen in image 4A. (Do not run power through top of the box.)

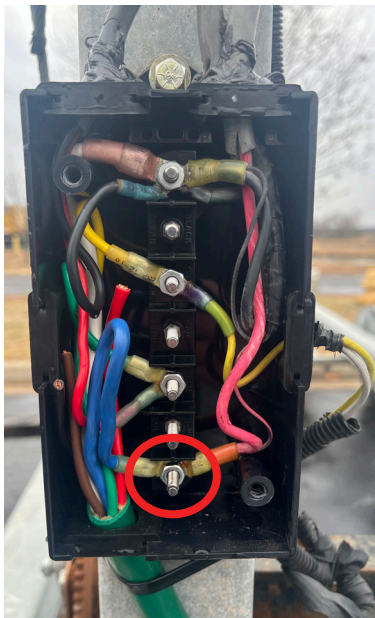
4A.



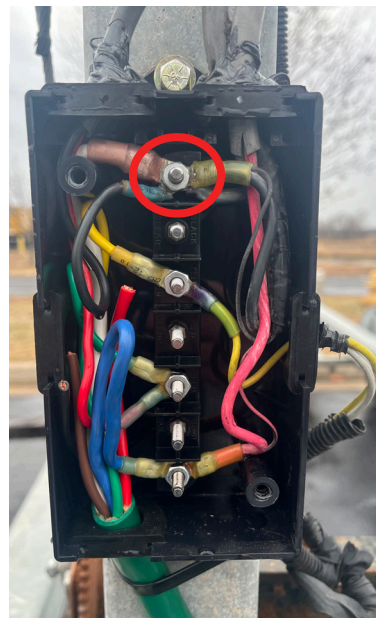
5. Secure the red (12v+) power #10 ring terminal to the bottom stud as seen in image 5A.

6. Secure the black ground #10 ring terminal to the top stud as seen in image 6A.

5A.



6A.



7. Once the terminals are secure, close the junction box and seal the grommet hole with silicone.

8. Secure any excess wire with a zip tie in a loop to the upright post the junction box is mounted to.

Routing Camera Cable

1. Route the camera cable as pictured in image 1A along the black bar and up the post on the left hand side, route shown in image 1B.

1A.



1B.



2. Follow the existing wiring along the side of the arrow board as seen in image 2C. From there, run the cable to the center of the arrow board where the camera will be located as seen in image 2D.

2C.



2D.



NOTE: camera cables must not be run through any pinch points and must be secured every 18" or at the installers discretion. Camera route might be subject to change and should be approved by KOHLTECH if install technician must deviate from the outlined route.

Have any questions or need additional information? | Call us today at 877.708.7803

KOHLTECH | www.kohltechnology.com | info@kohltechnology.com

Mounting Arrow Board Camera

1. Camera mounting location should be at the top center of the arrow board as pictured in image 1A and 1B.

1A.



1B.



2. Hold camera on arrow board face and mark hole location. Pre-drill 3/16 holes in the arrow board face (Do not over penetrate when drilling into arrow board).

3. Once the holes have been drilled, use blind rivets to secure the camera to arrow board.

Diameter - 3/16

Drill Size - 3/16

Grip Range - .180 - .250

Body Aluminum, Mandrel Steel

4. Once the camera is secure, connect the cable from the camera to the cable previously run ensuring a tight connection.

5. Slide the rubber boot from camera cable over the connection point to ensure a weather proof seal is achieved.

Adjusting Arrow Board Camera

1. Once all connections have been made and secured, the technician must test the camera angle/ view with the pre-paired wireless monitor provided in the kit.
2. Adjust the camera by loosening the set screws with the provided wrench on either side of camera and move the camera until a view like image 2A is achieved.

2A.



3. Photograph the final camera view and upload the photo to the KOHLTECH installation web page provided for a KOHLTECH representative to approve