

MOBILE DVR INSTALL GUIDE



MOUNTING DVR

- Mount lock box so that front door is unobstructed, and top can be removed.
- Mount DVR into lock box, using existing holes in lock box base allowing for front door clearance (Use included 1/2" fasteners)

CABLE CONNECTIONS

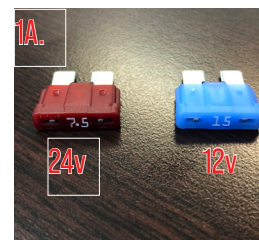
1. Connect Power cable to DVR (1A. Note correct fuse for system voltage)

DVR WIRING DIAGRAM - POWER

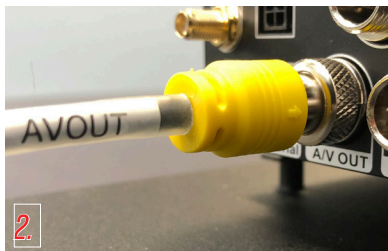
RED WIRE – CONSTANT 12V (FUSE 7.5 for 24v - 15 for 12v systems)

YELLOW WIRE – IGNITION SWITCHED

BLACK WIRE – GROUND



2. Connect monitor adapter to DVR A/V-Out



Monitor Adapter

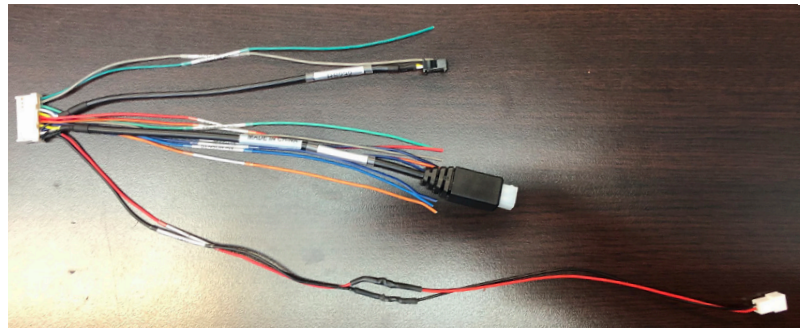
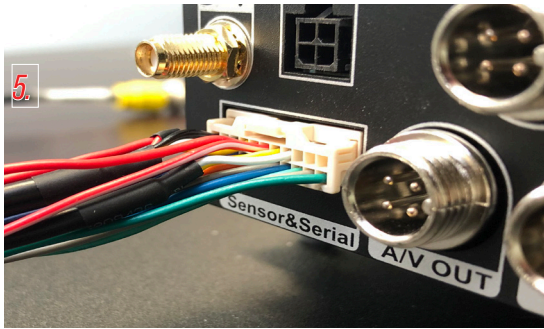
3. Connect monitor adapter to RS-232 of serial adapter.



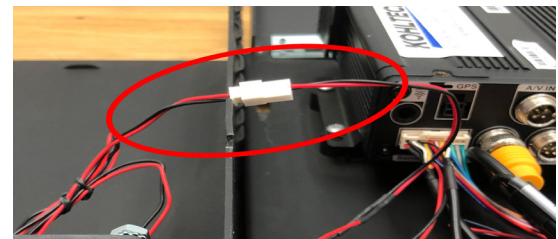
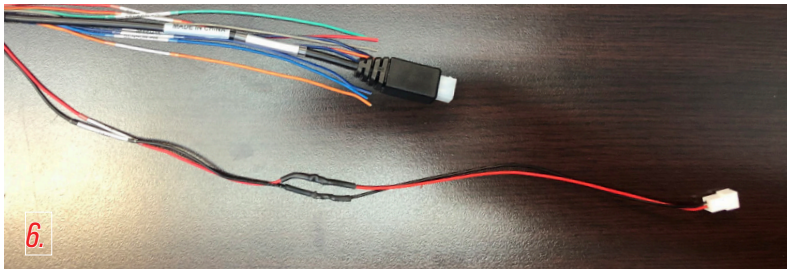
4. Connect the monitor adapter cable from the DVR to the in-cab monitor cable. (Ensure the Monitor is mounted within clear sight of driver/operator).



5. Connect the serial harness to the “sensor&serial” port on the rear of the DVR.



6. Connect the serial harness to the fan connector to the fan on the lockbox.



NOTE:

When reinstalling lock box top, ensure wires are clear and secured to prevent pinching between lock box top and base.

7. Routing of cameras and GPS/4G antenna cables *Optional when equipped*.

- Run all cables ensuring they are secured and there are no pinch points
- Mount Cameras to meet build specifications

8. 4G Antenna – Mount on any window with clear view of sky (Do not mount to sliding window)



9. Mount GPS Antenna on dash with silver label down and with clear view of the sky.



10. Connect 4g antenna cable to rear of DVR (Ensure you connect to the below port)



11. Connect GPS antenna cable to rear of DVR



12. After monitor is mounted in the cab within clear view of driver/operator connect the monitor to cable run to DVR



M5 MOBILE DVR STATUS LIGHTS



In normal operation you will see a blue PWR and red GREEN



If 4g equipped – under normal operation you will see a blinking green NET light.



A orange ERR and red ALM light may indicate a missing SD card or video loss.