

# KOHLTECH

Solutions For Every Industry & Every Build

Advanced Incident Prevention

KOHLTECH  
VIDEO MANAGEMENT CENTER



Live



Playback

Evidence

2022-03-09

Map

Video

VideoMap

# PRODUCT OVERVIEW

- TRUCK\_127
- TRUCK\_128
- TRUCK\_131
- TRUCK\_26
- TRUCK\_28
- TRUCK\_39
- TRUCK\_50
- TRUCK\_54
- TRUCK\_55
- TRUCK\_62
- TRUCK\_67
- TRUCK\_69
- TRUCK\_70
- TRUCK\_8
- TRUCK\_9
- TRUCK\_97
- CAR\_78
- SAFETY\_46

Vehicle Number TRUCK\_97

Device ID

Group

Type

Longitude

Latitude

Speed

Live Stream  
Remote Playback  
Video Download  
Real Time Alerts  
Driver Behavior

Map data © OpenStreetMap

Contents:

Product Overview..... 3

AI ADAS and DSM Breakdown.....4

System Packages and Pricing Overview.....5

Alerting and Notification Breakdown.....6

Incident Reporting .....7

Reporting and Data Gathering.....8

Video Encryption and Identity Protection.....9

Technical Camera Specifications.....10

Level 1 Price quote.....11

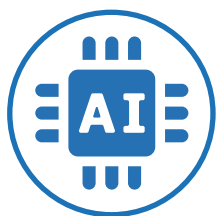
Level 2 Price quote.....12

Level 3 Price quote.....13

Why Kohltech.....14



# Prevent Disaster



## ADAS

(Advanced Driver Assistance System)

- Harsh driving detection
- Forward Collision
- Speeding
- Stop Sign Recognition
- Lane Departure Warning



## DSM

(Driver Status Monitoring)

- Driver Fatigue
- Unauthorized Phone Use
- Driver Distraction
- Seatbelt compliance
- Texting
- Smoking



## PREEMPTIVE WARNINGS

Prevent incident with real time alerts:

- Audible & visual driver alerts
- ADAS & DSM alerting
- System Health



## REAL TIME ALERTS/FEEDBACK

Email & console push alerts sent to Fleet Manager:

- ADAS/DSM & safety violations
- Speed
- Braking
- Vehicle handling



Back View



Front View



DSM Cam



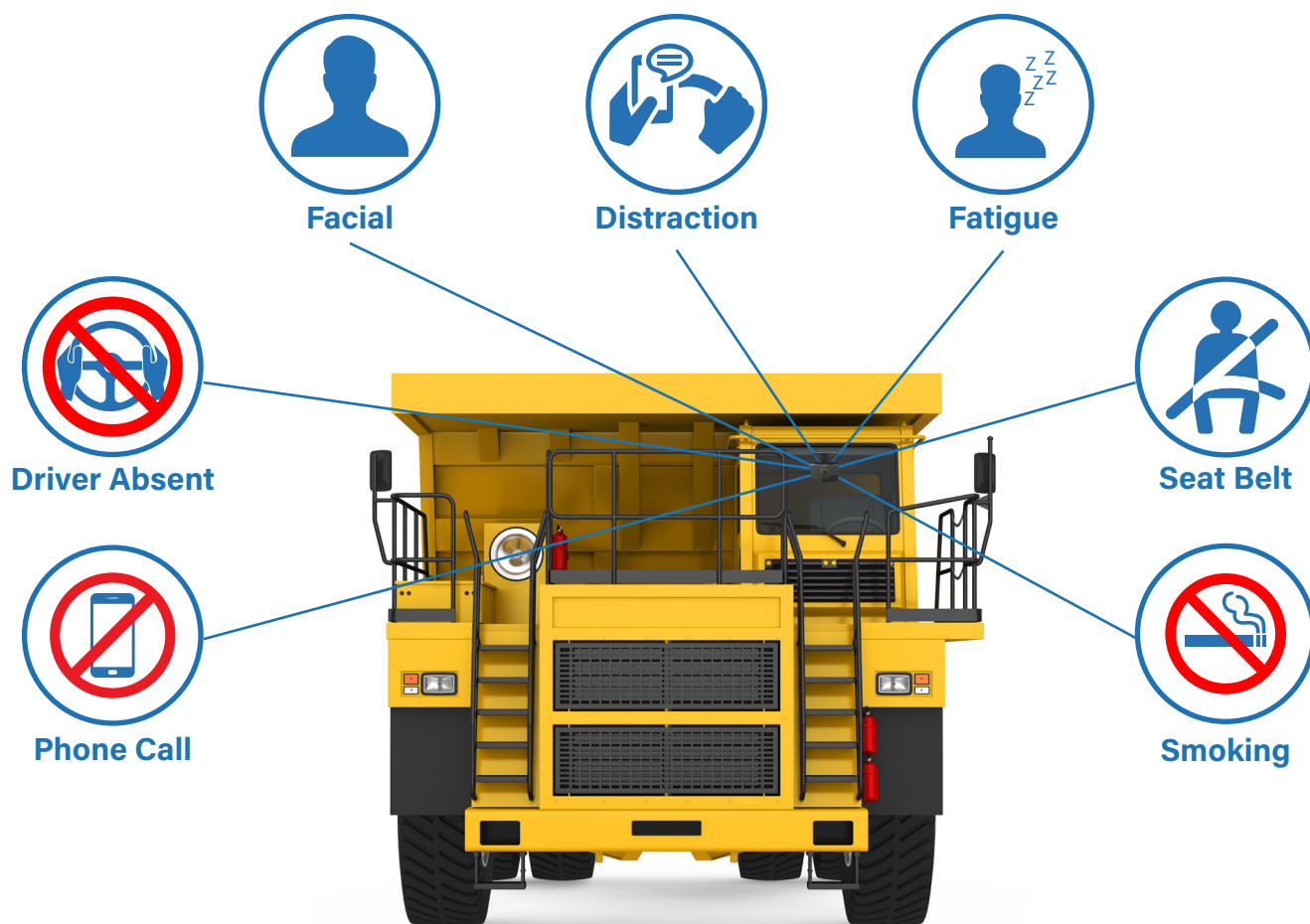
In-Cab Monitor

Have any questions or need additional information? | Call us today at 877.708.7803

KOHLTECH | [www.kohltechnology.com](http://www.kohltechnology.com) | [info@kohltechnology.com](mailto:info@kohltechnology.com)



Help prevent disaster with KOHLTECH's most sophisticated AI-powered 4G/Wi-Fi connected fleet safety system. Equipped with integrated driver and road facing cameras with connections for optional backup camera and monitor. Highly effective fleet risk management solution in a compact, tamper resistant package.



**Prevent incident with real time in cab alerts:**

- Visual alerts
- Audible alerts
- Video Loss
- SD failure
- Low Voltage
- Abnormal temperature
- Tampering

**Real time fleet management alerts:**

- Fatigue
- Speed
- Braking
- Vehicle handling
- Supports live streaming, video playback
- Up to 2TB of redundant industrial storage
- Event Upload

Have any questions or need additional information? | Call us today at 877.708.7803

KOHLTECH | [www.kohltechnology.com](http://www.kohltechnology.com) | [info@kohltechnology.com](mailto:info@kohltechnology.com)

# Package Comparison

## LEVEL 1

## LEVEL 2

## LEVEL 3

### Specifications

#### Level 1 \$ MONTH per unit

#### Level 2 \$\$ MONTH per unit

#### Level 3 \$\$\$ MONTH per unit

- 24/7 Video and audio recording	- 24/7 Video and audio recording	- 24/7 Video and audio recording
<ul style="list-style-type: none"> <li>- Incident email notifications</li> <li>- Incident phone notifications</li> <li>- In-cab alerts</li> </ul>	<ul style="list-style-type: none"> <li>- Incident email notifications</li> <li>- Incident phone notifications</li> <li>- In-cab alerts</li> </ul>	<ul style="list-style-type: none"> <li>- Incident email notifications</li> <li>- Incident phone notifications</li> <li>- In-cab alerts</li> </ul>
<ul style="list-style-type: none"> <li>- Unit and time specific video download per unit per request for additional fee (Encrypted video only)</li> </ul>	<ul style="list-style-type: none"> <li>- Monthly encrypted video download</li> <li>- Unencrypted video per request for additional fee</li> </ul>	<ul style="list-style-type: none"> <li>- Monthly encrypted video download</li> <li>- Monthly Unencrypted video per request</li> </ul>
<ul style="list-style-type: none"> <li>- Incident specific data download per unit per request for additional fee</li> </ul>	<ul style="list-style-type: none"> <li>- Monthly Incident specific data download per unit</li> </ul>	<ul style="list-style-type: none"> <li>- Monthly Incident specific data download per unit</li> <li>- Access to user portal for unlimited fleet control and reporting</li> </ul>

Have any questions or need additional information? | Call us today at 877.708.7803

KOHLTECH | [www.kohltechnology.com](http://www.kohltechnology.com) | [info@kohltechnology.com](mailto:info@kohltechnology.com)

Never miss a thing with our easy to use real time alerting system. When a programmed infraction like driver fatigue or distracted driving takes place, there will be 4 real time alerts:

- In-cab visual alerts
- In-cab audio alert - notifying the operator of the infraction type
- Email alert to the fleet manager
- User portal alert/notification

## Email Alerts

From: Fleet Alerts <fleetalerts@kohl-tech.com>  
Sent: Saturday, April 10, 2021 2:35 AM  
To: Patrick Micek <pmicek@kohl-tech.com>  
Subject: Driver yawning Alarm

License plate number	Time	Alarm Type	Alarm Description	Evidence Video
KW_DEN_AI_1	2021-04-10 06:09:06	Driver yawning		<a href="#">Open video</a>

Alarm Type	Alarm Description	Evidence Video
Driver making calls		<a href="#">Open video</a>

## Portal Alerts

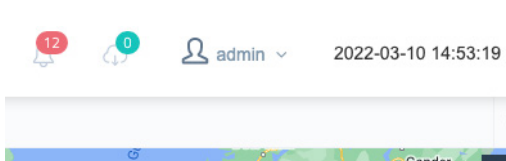


Plate No.	Type	Times
TRUCK_56	Video loss alarm	2
TRUCK_56	Illegal shutdown	2
TRUCK_70	Acceleration alarm	1
TRUCK_70	Video loss alarm	4
TRUCK_70	Illegal shutdown	2
02-308 DBX	IO 1	1

## In-Cab Alerts



Rest assured that no matter the time of day your fleet will be gathering data round the clock that can help mitigate loss, improve day-to-day operational safety and protect your bottom line. Easily retrieve and sort incident data by unit, time, location or incident type.

## Unit Reports

License plate number	Owned car group	Time	Speed	Alarm Type	Alarm Description	Latitude	Longitude
KW_DEN_AI_1	KIEWIT_DENVER	2021-05-06 08:43:50	20	Fatigue driving		39.293476	-76.654080
KW_DEN_AI_1	KIEWIT_DENVER	2021-05-06 08:44:40	24	Fatigue driving		39.293476	-76.654080
KW_DEN_AI_1	KIEWIT_DENVER	2021-05-06 08:46:00	35	Fatigue driving		39.293476	-76.654080
KW_DEN_AI_1	KIEWIT_DENVER	2021-05-06 09:01:20	0	No Driver		39.293476	-76.654080
KW_DEN_AI_1	KIEWIT_DENVER	2021-05-06 10:00:17	30	Distracted Driver		39.293476	-76.654080
KW_DEN_AI_1	KIEWIT_DENVER	2021-05-06 10:00:37	47	Driver Making Calls		39.293476	-76.654080
KW_DEN_AI_1	KIEWIT_DENVER	2021-05-06 10:01:17	50	Driver Making Calls		39.293476	-76.654080
KW_DEN_AI_1	KIEWIT_DENVER	2021-05-06 10:02:00	50	Forward collision		39.275055	-76.642553

## Email Reports

Receive scheduled email alerts with saved video clips that highlight specific infractions/incidents.

From: Fleet Alerts <fleetalerts@kohl-tech.com>  
 Sent: Friday, April 9, 2021 8:42 PM  
 To: Patrick Micek <pmicek@kohl-tech.com>  
 Subject: Distracted driver Alarm

License plate number	Time	Alarm Type	Alarm Description	Evidence Video
KW_DEN_AI_1	2021-04-10 00:36:52	Distracted driver		<a href="#">Open video</a>

## Video link to specific incident

View flagged video of past or present incidents along with all associated vehicle data.

Alarm Type	Alarm Description	Evidence Video
Driver making calls		<a href="#">Open video</a>

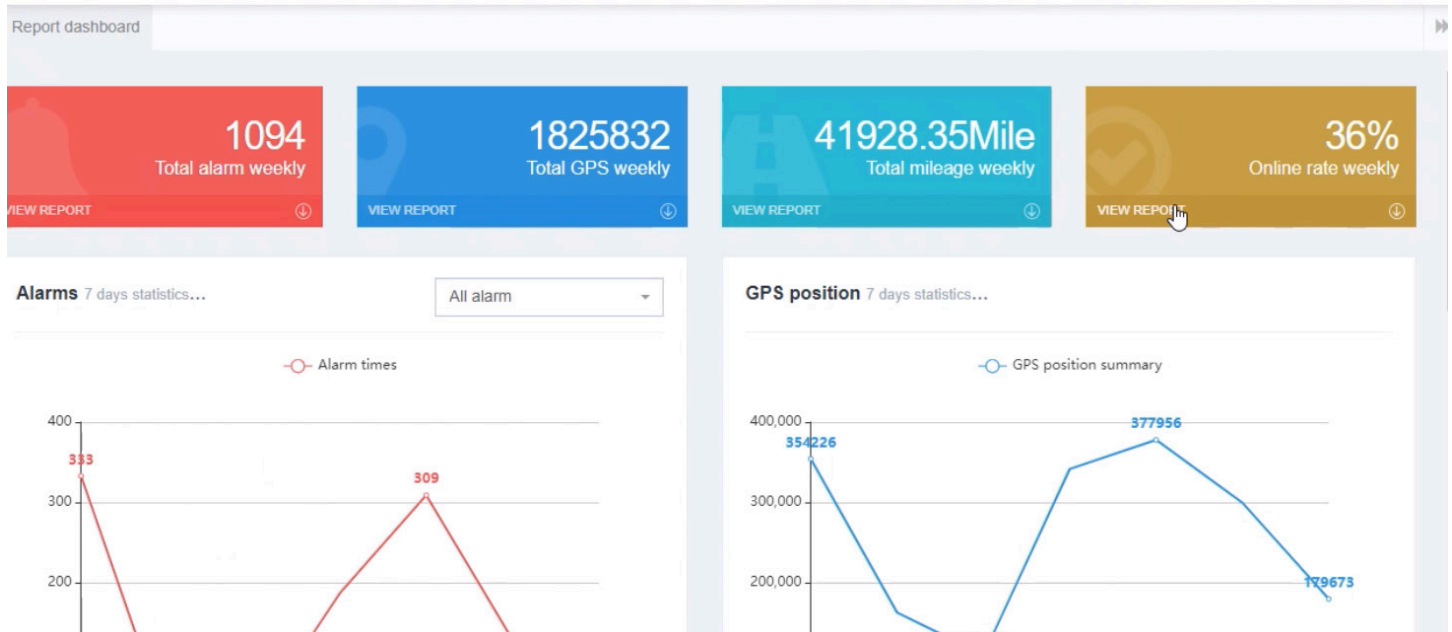
Have any questions or need additional information? | Call us today at 877.708.7803

KOHLTECH | [www.kohltechnology.com](http://www.kohltechnology.com) | [info@kohltechnology.com](mailto:info@kohltechnology.com)

Retrieve and run reports for all flagged incidents within your fleet.

## System statistics overview

admin 2022-03-10 11:40:40



## Search for specific incident types

admin 2022-03-10 14:42:50

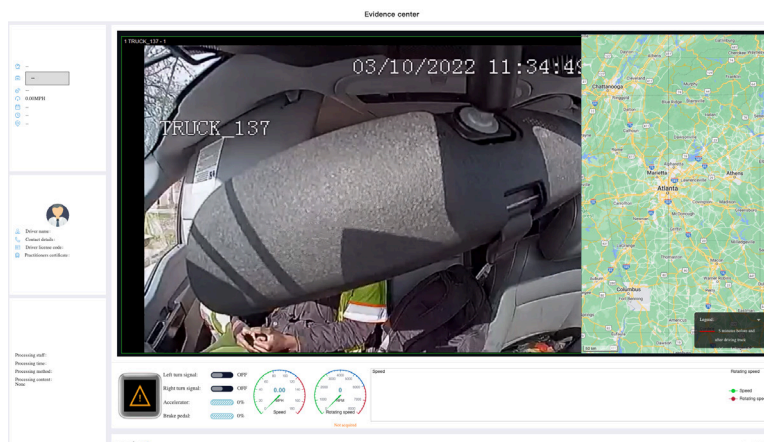
Driving time report Alarm statistics

2021-07-01 To 2022-03-03 Driver yawning QSearch

Alarms Alarm Types Alarm Info Query

Parent fleet	Plate No.	Serial No.	Alarm type	Alarm times
TES_MD	TRUCK_119	009900EB9F	Driver yawning	4
KIEWIT_DENVER	KW_DEN_AI_1	0099007EFD	Driver yawning	27

## View Videos of specific incidents

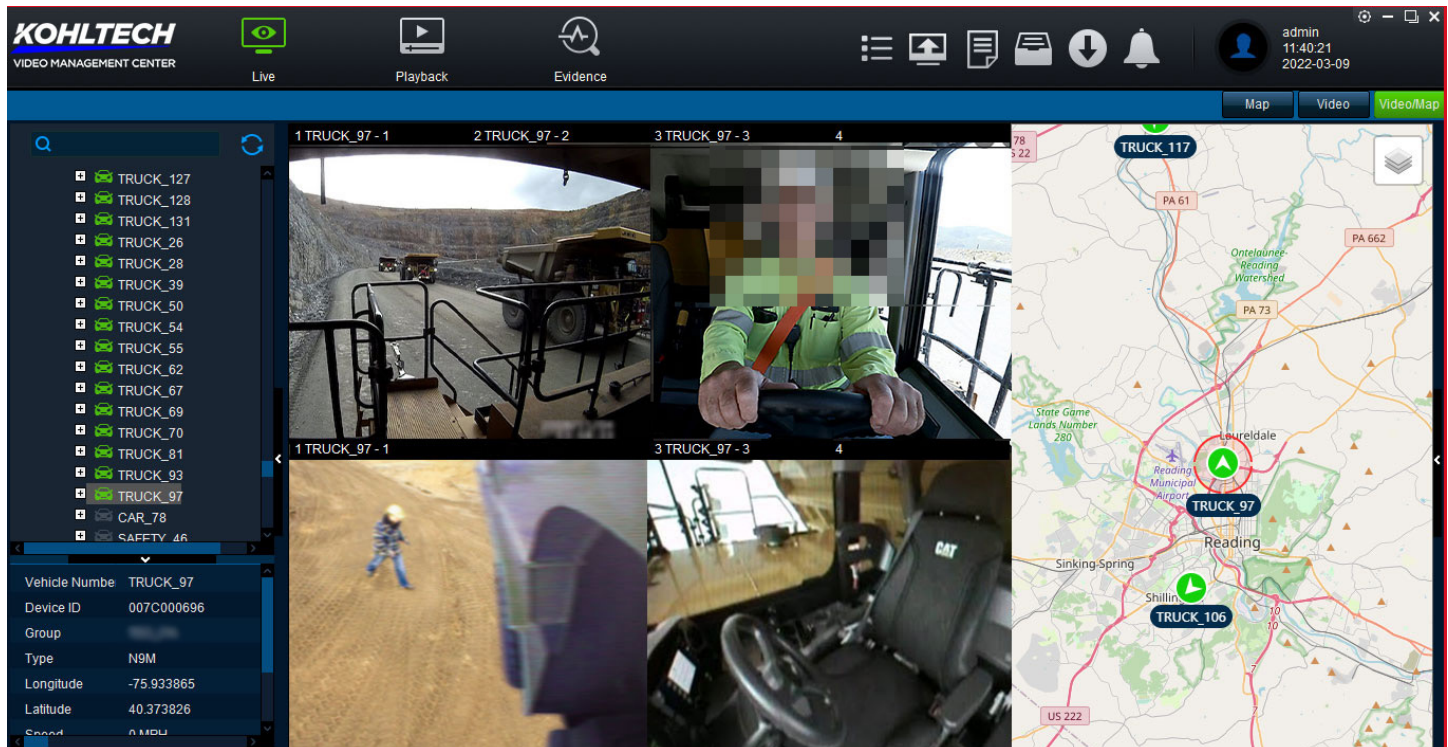


Have any questions or need additional information? | Call us today at 877.708.7803

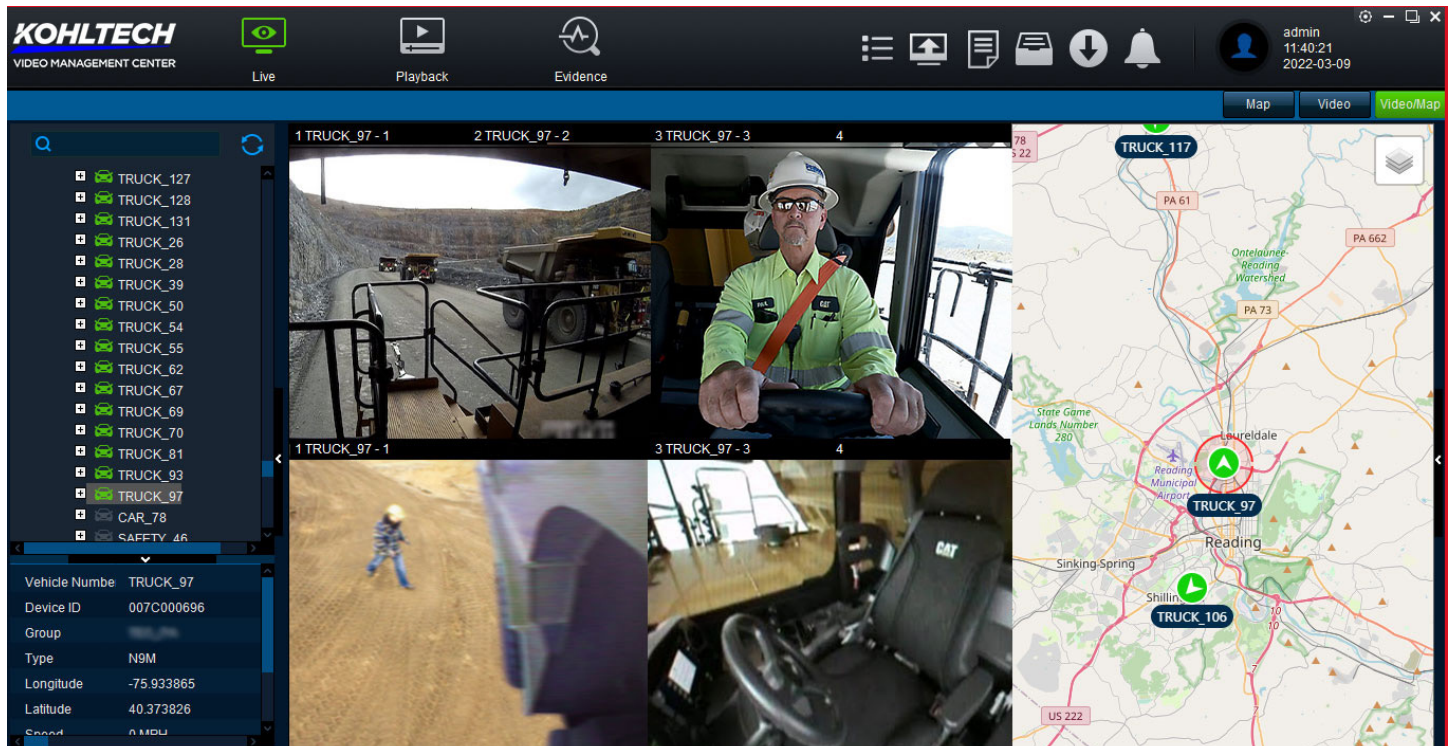


Remove the liability and protect reputation with our video encryption feature. All video provided will come with driver identity protection. Videos can be unmasked per written request signed by designated facility representative for an additional fee.

## Video with Driver Identity Protection



## Video without Driver Identity Protection



Have any questions or need additional information? | Call us today at 877.708.7803

Capture what matters when it matters. The AI4DC has HD 1080P recording that can pick up on the most important details of an incident removing all the guess work from video review.

Model	AI6DC	Built-in MIC
	WIFI	Integrated 2.4G&5.8G
Network	Bluetooth	Integrated
	4G	Integrated
Positioning	GPS	Integrated
Sensor	6-axis sensor	Integrated
Taximeter	CAN Data	Integrated
Function	Collection	Integrated
Indicator	Dual Color indicators for recording status and alarm.	
Storage	TF Card	Support 2pcs TF card. Each TF Card Max.256GB.
Video/Audio	Video record	Default support 2CHs. It can be extended to 4CHs, 1 Audio input.
	Res/Frame rate	DSC : 1080P@20fps ADAS : 500MP@20fps
	Max. Video Resource	Main Stream : + 1080P@20fps(IPC) Sub Stream : 4*CIF@30fps
	Image	Brightness, chroma, contrast, color saturation and Sharpness adjustment
	Video Codec	H.264/H.265
	Audio Codec	ADPCM/G.711/G.726, Default is G.711
	CBR/VBR	Default support VBR,CBR is optional

	Audio	Built-in MIC
	Speaker	Built-in Speaker 1.5W 8R
ADAS Camera	Sensor Shutter Speed	1/2.7" 5 megapixel CMOS 1/30s-1/100000s Sensor
	Lens	2.8mm
	Lens types	Built-in Lens
	WDR	Digital WDR
	BLC	Support
	S/N	≥39dB
DSM Camera	Sensor	1/2.8" 2M pixel CMOS Sensor
	Shutter speed	1/30s-1/100000s
	Lens	2.1mm
	Lens types	Built-in Lens
	WDR	Digital WDR
	BLC	Support
Ports	S/N	≥48db
	RS232	1
	IO Input	2 IOs
Protocol	CAN USB	1 1 mini USB port
	Network Protocol	HTTP,TCP,ARP,UDP,FTP,DHCP,DNS,IPV4, NTP
Power Info	Power Supply	9-36V
	Internal battery	Not Available
	Typical Power Consumption	Less than 8W
	Power Consumption	Less than 11.5W
General	Working Temperature	-40°C~+70°C
Specification	Storage temperature	-40°C~+85°C
	Humidity	15% - 90%

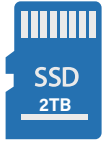








# WHY KOHLTECH:



## SSD + SD STORAGE

Redundant industrial storage protects data with automatic failover should a card ever fail. Up to 2TB of storage allows up to 13 weeks of recorded video providing additional time to download video or identify the cause of unreported damage.



## ULTRA WIDE VIEW LENS

Up to 180-degree field of view captures 1/3rd more area than standard 120-degree cameras. Captures rear of truck virtually edge to edge ensuring side swipes and near misses are captured. Dramatically improves driver field of view while backing up helping to avoid unseen obstacles.



## HD CAMERA

1080p (2mp) ensures higher detail at further distances. Provides almost double the resolution of 720p cameras necessary for license plate and facial recognition.



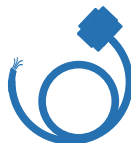
## NO IR REFLECTION

Unique camera design eliminates IR reflection at night from dirty lenses. Powerful external illuminators ensure high quality video in total darkness and enhanced clarity for safer night operations.



## ADVANCED MONITOR

Quad View, Touch Screen Monitor allows on scene, in-cab video search, playback and export. Improve view by switching views to any camera with the tap of the screen. 2-Way Audio communication with driver with data plan.



## ARMORED CABLES

Stainless steel armored cables protect against video loss due to abraided, pinched or cut wires. Added protection against employee tampering.



## POWER PROTECTION

On board Super Capacitors ensure uninterrupted power to the DVR when vehicle power is interrupted with dead batteries or while jump starting. Ensures file system protection and safe shutdown of DVR to eliminate data corruption.



## MOBILE CONNECTIVITY

4G LTE Embedded Modem enables Real Time Tracking, Live View and Remote Video downloads. Comprehensive System Health Reporting provides Real Time Alerts for video loss, tampering and DVR status.

# KOHLTECH

Solution based technology for every build

Have any questions or need additional information? | Call us today at 877.708.7803

KOHLTECH | [www.kohltechnology.com](http://www.kohltechnology.com) | [info@kohltechnology.com](mailto:info@kohltechnology.com)